



THE SPRINGBOARD ROAD SHOW FOUNDATION (POTENTIALS FOR TVET AND ATVET)



AGENDA

Introduction

Benefits of TVET and ATVET

My journey in the hospitality industry

Practical Steps for Participants

Conclusion



INTRODUCTION

Technical and Vocational Education and Training (TVET) is crucial in Ghana for national development, poverty reduction, and creating a skilled workforce. It provides practical, industry-focused skills that enhance competitiveness, create employment opportunities, and empower individuals, especially women and vulnerable groups,





BENEFITS OF TVET AND ATVET

INCOME GENERATION:

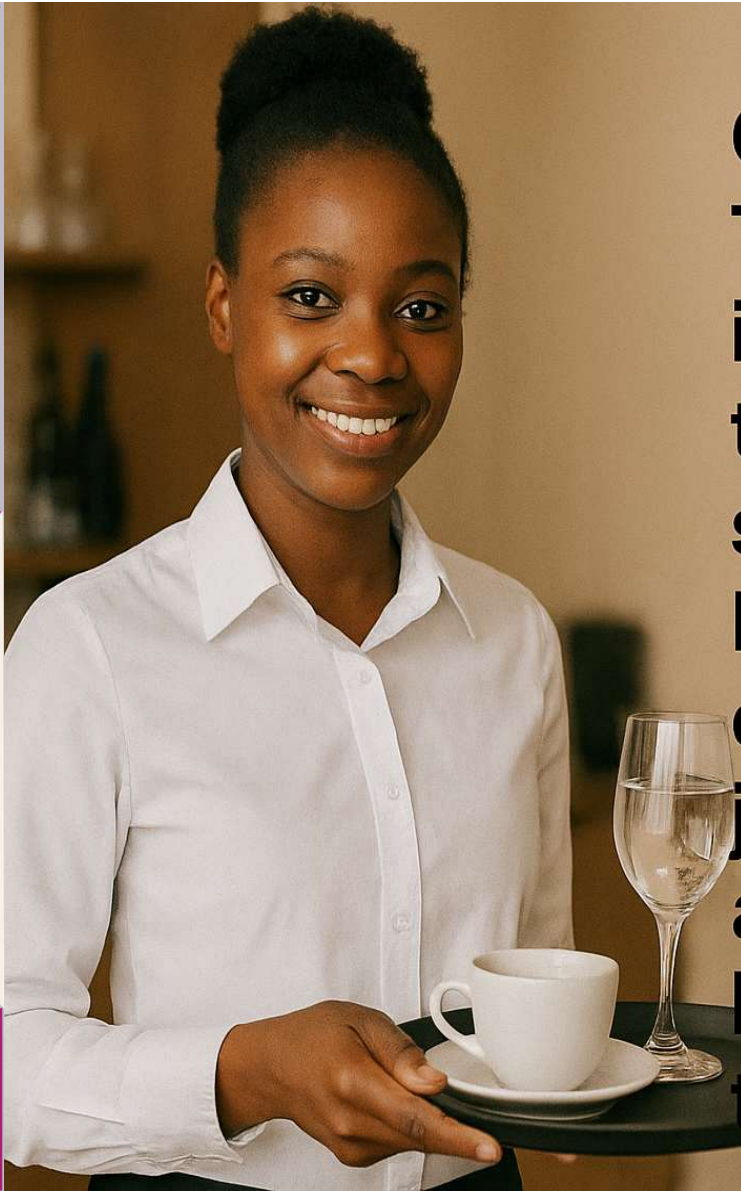
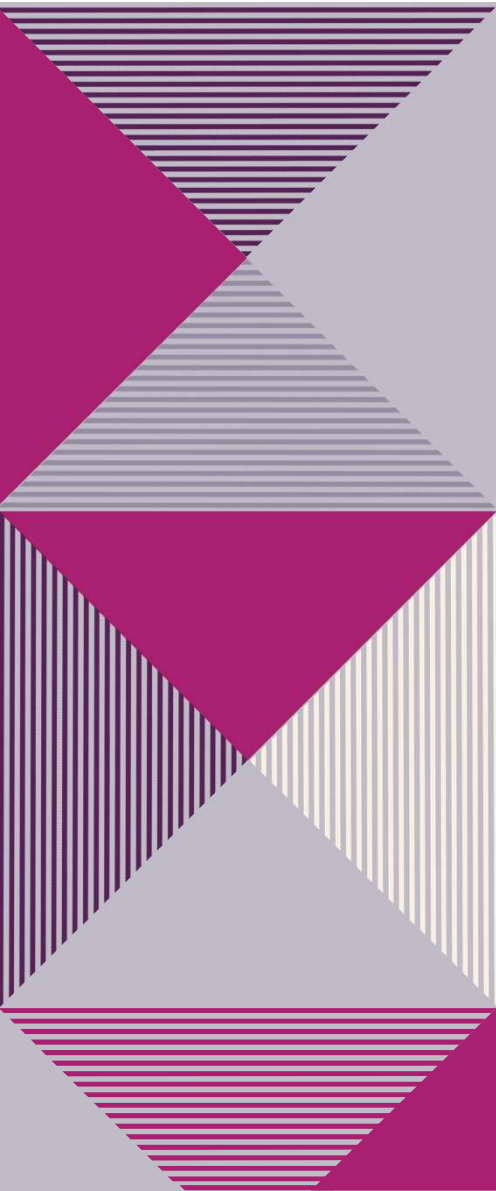
TVET helps people acquire skills that lead to better income-earning capacities and stable employment, directly tackling poverty



SOCIAL INCLUSION:



It offers an alternative path to success for those who may not excel in traditional academic settings, promoting social mobility and empowering vulnerable groups, including women



One of the branches of TVET is the hospitality industry, which happens to be my area of specialization. Hospitality it is a major economic driver creating jobs, generating income, and supporting local businesses through tourism and services.



MY JOURNEY IN THE HOSPITALITY INDUSTRY:

I discovered that my strength lay in practical application, rather than theoretical knowledge. Embracing this realization, I focused on the hands-aspect of the catering industry where I could leverage my skills and passions to drive success.

Hospitality industry is not only on the provision of food and beverage services. Hospitality is now technology driven.

1. Food waste reduction: local sourced ingredients to reduce transportation waste and support local farmers.
2. Use of portion control equipment to minimize wastage
3. Organic produce
4. Home Delivery
5. Automation and use of disposables
6. Electronic payment



Young innovators are using mobile apps and social media to market their goods and services, thereby cutting out middlemen and reaching out to broader and wider markets.



A student from Bolgatanga Central Technical Institute who started a small food vending and home delivery is now operating an ultra-modern large-scale catering service and has employed other catering staffs.

TURNING OPPORTUNITIES INTO LIVELIHOODS

The Upper East region has the potential for agricultural growth owing to the fact that agriculture is a mainstream income generating venture in the region. ATVET has become a sector that can transform lives and creates sustainable livelihoods for the youth.

1. Agribusiness: Shea Processing and Value Addition: there are many opportunities in processing, packaging, branding, distribution and export. Imagine turning shear nuts into shear butter and cosmetics for the global markets. The shea industry provides jobs for women and youth. Adding value through butter, oils, cosmetics and export products creates sustainable businesses

A student from Bolgatanga Central Technical Institute who started a small food vending and home delivery is now operating an ultra-modern large-scale catering service and has employed other catering staffs.



PRACTICAL STEPS FOR PARTICIPANTS:

1. Identify your passion sector whether catering, Fashion, or ATVET
2. Acquire the right skills through TVET, ATVET programs, apprenticeships, or mentorship.
3. Start small but think big, use the little you have as a stepping stone.
4. Network and partner with other young people, cooperatives and stakeholders.
5. Leverage digital tools to market products, connect with buyers and access financing.

CONCLUSION

Before you leave today, I invite you to write down one TVET or ATVET opportunity that excites you and make a personal commitment to take the first step within the next month.

The future belongs to those who use their skilled knowledge to make impact and positively affect lives. You are not just job seekers; you are job creators. TVET and ATVET is waiting for your energy, creativity and leadership. Let's step forward together to make Ghana a beacon of hope and development.

An abstract geometric design on the left side of the slide. It features a dark blue background with a diagonal line running from the top-left corner towards the bottom-right. To the left of this line, there are several overlapping geometric shapes: a dark purple triangle at the top-left, a light grey semi-circle, a pattern of concentric circles, a magenta triangle with diagonal lines, a magenta triangle with horizontal lines, a magenta triangle, a grey triangle, and a magenta triangle. A small white circle is located on the diagonal line near the top-left corner.

THANK YOU